

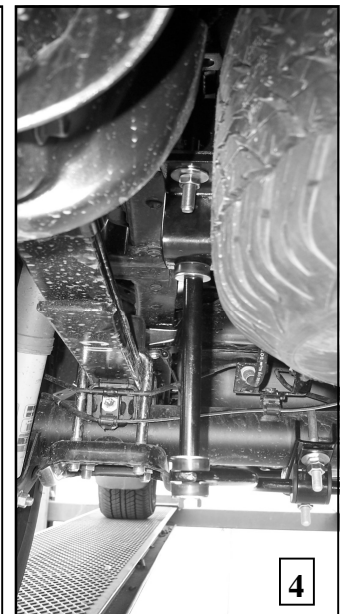
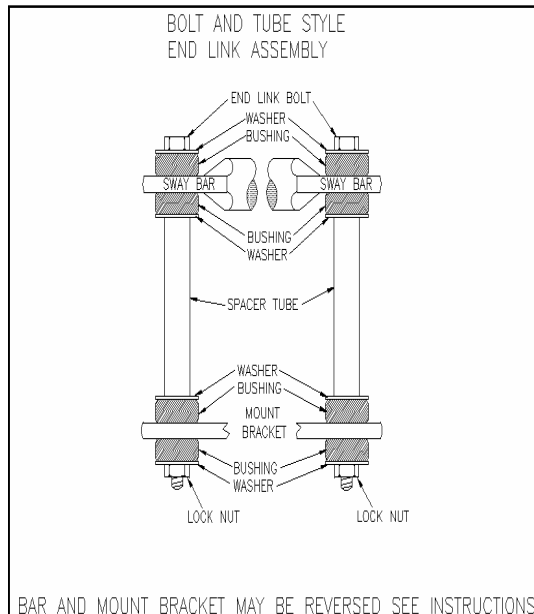
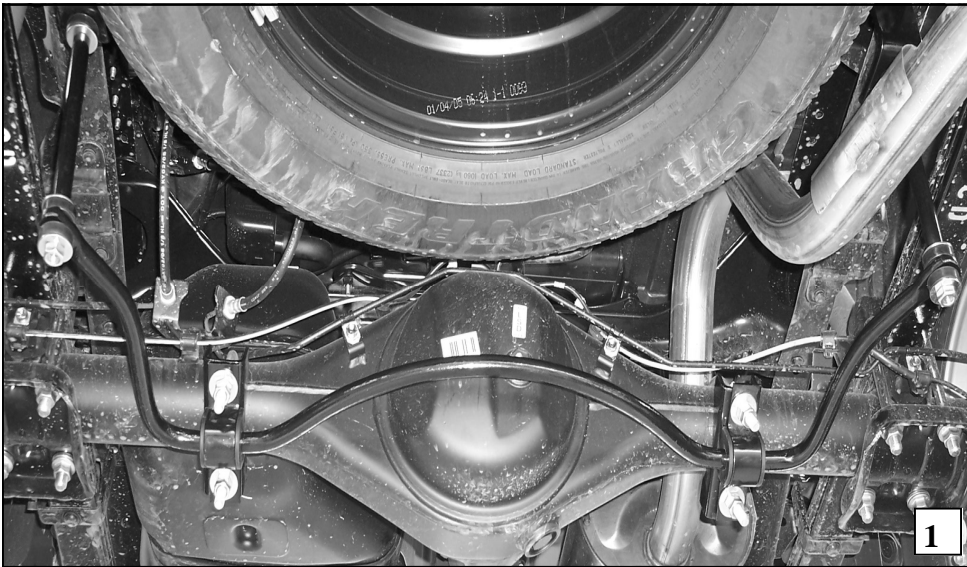
Hellwig PRODUCTS.com

559-734-7451 800-367-5480 FAX 559-734-7460

INSTALLATION INSTRUCTIONS

Rear Stabilizer Bar 2005 Toyota Tacoma 4x4

Thank you for purchasing a quality Hellwig Product.



7671 (R-7671)

04/01/05

Hellwig PRODUCTS.com

559-734-7451 800-367-5480 FAX 559-734-7460

TORQUE TABLE

BOLT SIZE: 3/8" = 20-30 ft. lbs. – 7/16" = 35-45 ft. lbs. – 1/2" = 50-70 ft. lbs. – 9/16" = 70-90 ft. lbs.

SAFETY: BEFORE STARTING YOUR INSTALLATION, BE SURE TO SET PARKING BRAKE AND CHOCK THE WHEELS.

NOTE: TO EASE INSTALLATION AND TO PROPERLY ADJUST BAR, THE WEIGHT OF THE VEHICLE MUST BE ON THE SUSPENSION, AS IF DRIVING DOWN THE ROAD. DO NOT RAISE THE VEHICLE BY THE FRAME.

NOTE: THIS UNIT IS DESIGNED TO MOUNT TO THE BOTTOM OF THE VEHICLES AXLE WITH THE ARMS OF THE SWAY BAR TOWARDS THE REAR OF THE VEHICLE.

NOTE: THIS KIT INCLUDES LOCKNUTS WHICH REQUIRE TIGHTENING WITH A WRENCH AFTER BEING STARTED BY HAND

1. Take and position the U-bolts on the axle and install the saddle brackets to the U-bolts. Position the D-bushings on the sway bar in a close a position as in photo one (1). Take care with any electrical wires or brake lines installed on the axle as not to damage or crimp during tightening. (The brake lines can be bent slightly to allow clearance for the U-bolts).
2. Take and position the square U-bolts over the vehicles frame. Position the u-bolt spacers on the vehicles frame, insert the U-bolts leg thru one of the spacers tubes , the other will be positioned just inside of the upper and lower legs of the vehicles C-channel frame. Install the crossbars supplied to the u-bolts and attach the Z-brackets to the inner legs of the square U-bolts using the mounting hardware provided. **SEE PHOTO TWO (2). Leave loose at this time to allow for adjustment later.**
3. Position the U-plates over the D-bushings on the sway bar. Raise the sway bar and attach the u-bolts that were installed on the vehicles axle using the mounting hardware provided. The U-bolts on the axle and the D-bushings on the sway bar can be relocated as needed to allow for the best possible fit. **Leave loose at this time to allow for adjustment later.**
4. Assemble the end link assemblies as in the diagram. Attach the end links to the Z-brackets on the vehicles frames. **Tighten just slightly until the bushing start to bulge as not to damage the bushings.** Raise the arms of the sway bar to the end links and complete the end link assembly. SEE PHOTOS THREE (3) AND FOUR (4). Again take care as not to over tighten the end links to cause any damage.
5. With the sway bar center, the arms level with the ground and the end links straight up and down as possible torque all the mounting hardware to the specified rates. **THE AXLE U-BOLTS CAN BE ROTATED TO ALLOW FOR THE BEST POSSIBLE FIT.**
6. Bounce the vehicle up and down check for clearance for all undercarriage components. Check for clearance on electrical wires, exhaust, brake and fuel lines etc..
7. Test drive the vehicle recheck your installation re-adjust and re-torque as needed.
8. After one week of driving recheck your installation. Re-adjust and torque as required. Re-check your installation on a monthly regular basis thereafter.

ATTENTION INSTALLER: BE SURE THE CUSTOMER RECEIVES THIS INSTRUCTION SHEET, ALL IMPORTANT NOTE CARDS, WARNING CARDS, AND THE WARRANTY FORM.

Hellwig PRODUCTS.com

559-734-7451 800-367-5480 FAX 559-734-7460

PARTS LIST

RSB # 7671

PART #	QTY	DESCRIPTION
20217667	1	3/4" SWAY BAR
20907671	1	COMPLETION KIT #-7671
20800087	2	SPACER
20800430	2	U-PLATE
111000496	2	3/4" POLY BUSHING
20800871	2	SADDLE BRACKET
118000672	2	7/16" X 3-1/8" X 5-5/8" ROUND U-BOLT
118000619	2	7/16" X 2-5/8" X 5-3/4" SQUARE U-BOLT
20800008	2	CROSSBAR
20800720	2	Z-BRACKET
10090312	2	7/16" X 12" END LINK
20800397	2	3/8" X 7" END LINK SPACER
125030336	1	END LINK BUSHING BAG # BG-336
111000389	8	END LINK BUSHING
125020022	1	SMALL PARTS BAG # BG-022
107401042	8	7/16" LOCK NUT
102420041	16	7/16" FLAT WASHER
105421042	12	7/16" HEX NUT
135007671	1	INSTRUCTION SHEET (R-7671)

7671 (R-7671)

04/01/05