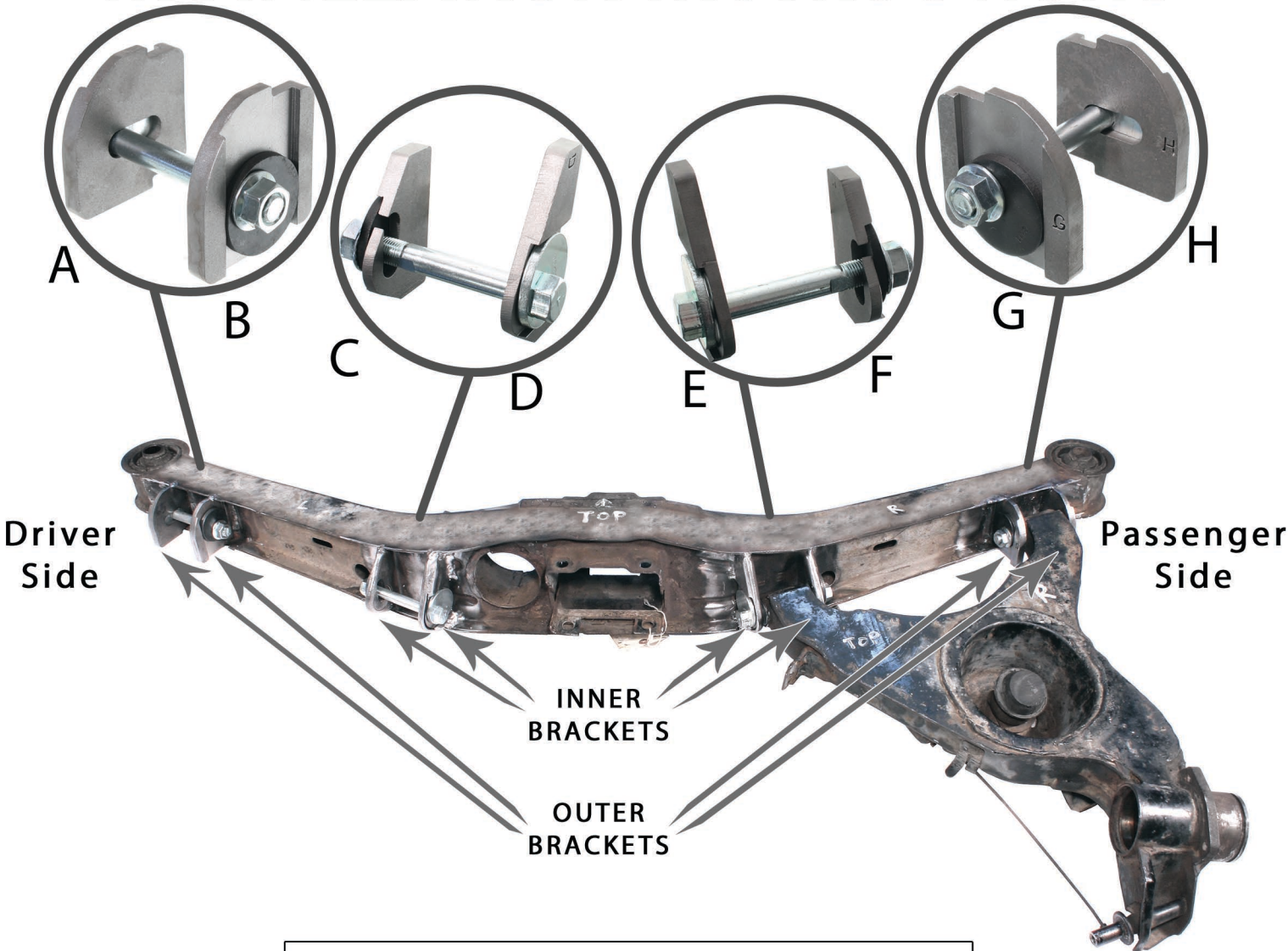


DATSUN 510/610 REAR CAMBER KIT

RP72669

INSTALLATION INSTRUCTIONS



CAUTION: This kit must be installed by a qualified mechanic, otherwise an unsafe vehicle and/or personal injury could result.

RARE
PARTS[®]
INC.

STEERING AND SUSPENSION

DIAMOND SERIES

WWW.RAREPARTS.COM

800.621.2005

Starting with passenger side -

1. Remove Outer brackets as shown in Fig. 1a & 1b.

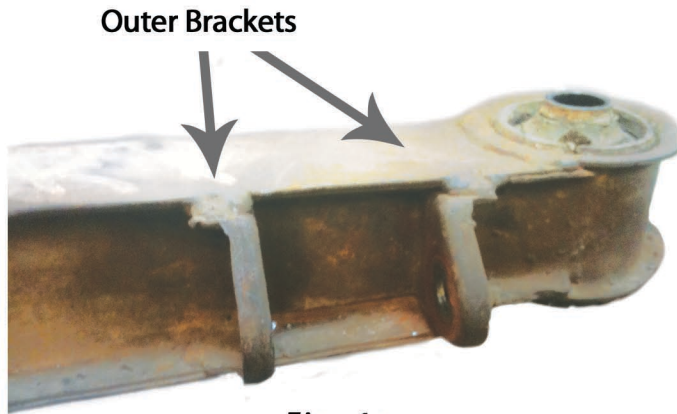


Fig. 1a



Fig. 1b

2. Install plates E & F into the recesses on the existing Inner bracket. Use the cam bolt to hold plates in place, and tack weld the plates as shown in Fig. 2.



Fig. 2

3. Remove bolt, install control arm and reinstall bolt.



Fig. 3

4. Using the installed control arm for correct spacing, install outer plates **G** & **H**, and cam bolt.

Tack plates into place as shown in Fig. 4.



Fig. 4

5. Remove control arm. Using a die grinder, slot existing Inner brackets to match the cutouts (Fig. 5) in the supplied plates.

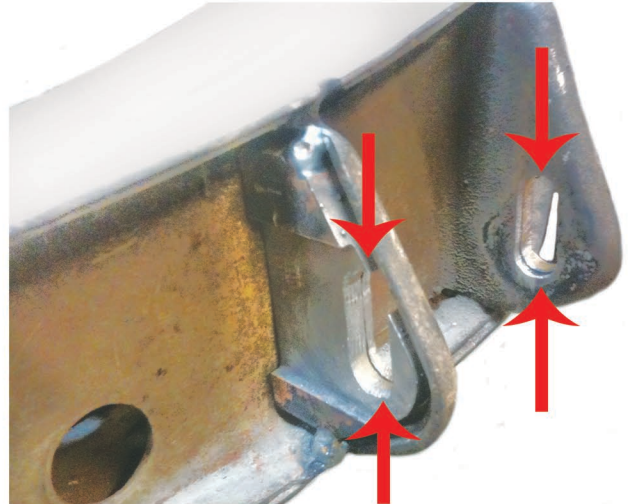


Fig. 5

6. Finish welding plates **E**, **F**, **G** & **H**.

**Note: do not weld the faces of the Inner brackets, this will cause the cam bolts to bind. (Fig. 6a)*

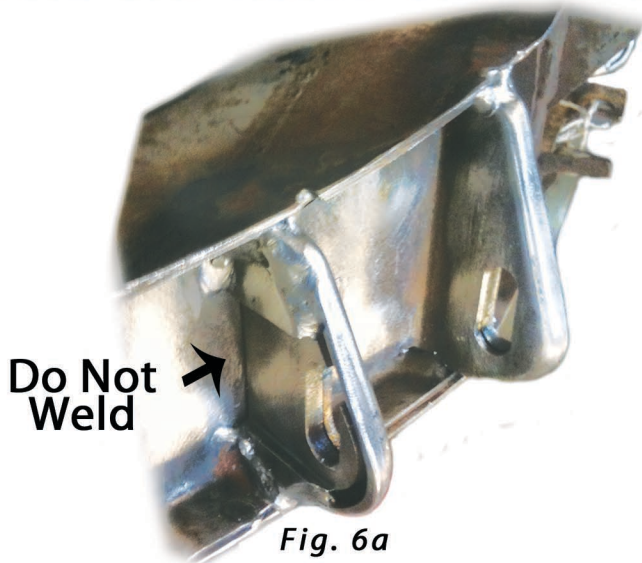


Fig. 6a



Fig. 6b

7. Before installing control arm, Install cam bolts again and ensure bolts can rotate fully without binding. Grinding may be required on existing Inner brackets (red arrows in Fig. 7).

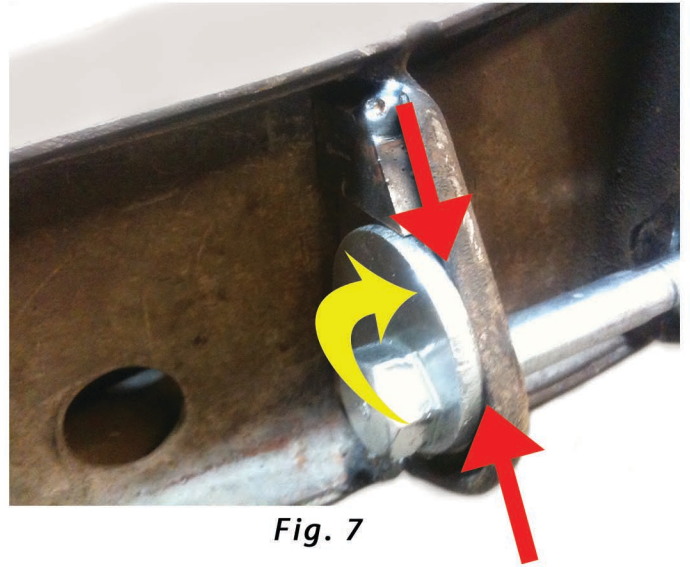


Fig. 7

Install control arm.

8. Repeat steps 1 through 7 on driver's side using plates **A & B** for outer bracket, and **C & D** for the inner bracket.

9. Align after installation.

If you have any questions, please give us a call.

Rare Parts, Inc.
800.621.2005
tech@rareparts.com
621 Wilshire Ave, Stockton CA 95203