

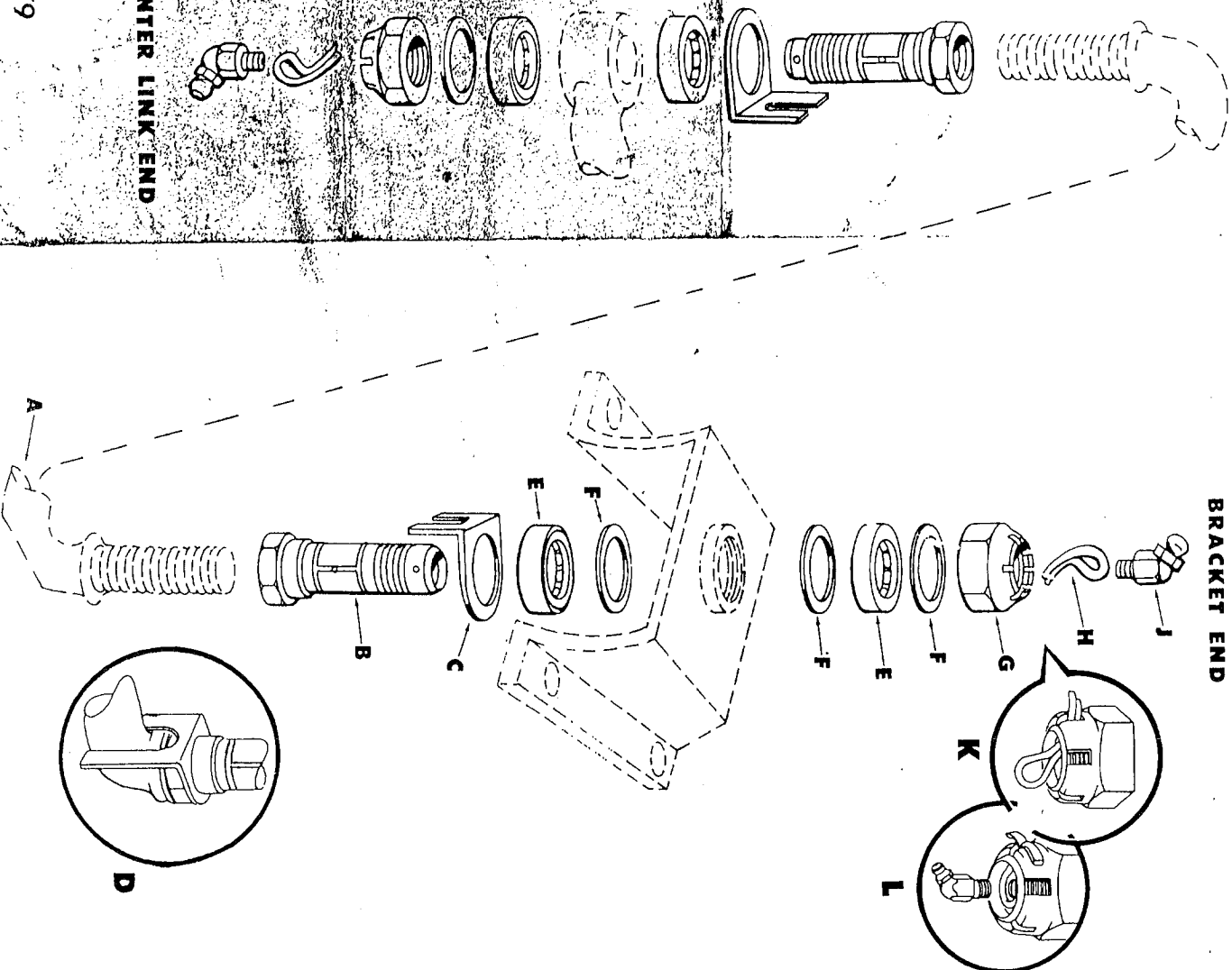
RP 20344

INSTALLATION INSTRUCTIONS

FOR BALL BEARING IDLER ARM KIT

Form 1479

BRACKET END



1. Remove the idler arm and frame bracket from the car and clean thoroughly.
2. Hold idler arm "A" in vise with threaded bracket end up.
3. Thread bearing mounting sleeve "B" on the idler arm until shoulder of the sleeve bottoms against the shoulder of the idler arm. Be certain to lock securely.
4. Install lock plate "C" over mounting sleeve "B" as shown in view "D".
5. Pack ball thrust bearing "E" with grease and install over mounting sleeve "B" with closed side of bearing against lock plate "C".

NOTE: A Moly-desulphide base grease is recommended for all lubrication.

6. Install flat washer "F" on mounting sleeve "B".
7. Install frame bracket over mounting sleeve "B", as shown in illustration.
8. Install flat washer "F" over mounting sleeve "B" against frame bracket.
9. Pack ball thrust bearing "E" with grease and install over mounting sleeve "B" with open side of bearing toward the frame bracket.
10. Install spacer washer "F".
11. Thread slotted nut "G" onto mounting sleeve "B" until all play is removed from idler arm, then using a torque wrench, tighten nut to 20-25 ft. lbs.
12. If slot in nut fits not in alignment with cotter pin hole in mounting sleeve "B", tighten nut "G" further until alignment is reached.
13. Thread special curved cotter pin "H" through the hole in mounting sleeve "B" and through slot in nut "G".
14. Install grease fitting "J" through hole in cotter pin "H" and into mounting sleeve "B". Then spread cotter pin "H" as shown in views "K" and "L".
15. Lubricate oil fitting.
16. Remove assembly from vise, then place other end of idler arm in vise with threaded end up.
17. Assemble and lubricate parts as shown in center link illustration, using the bracket end as an example.

CENTER LINK END

Form 1479