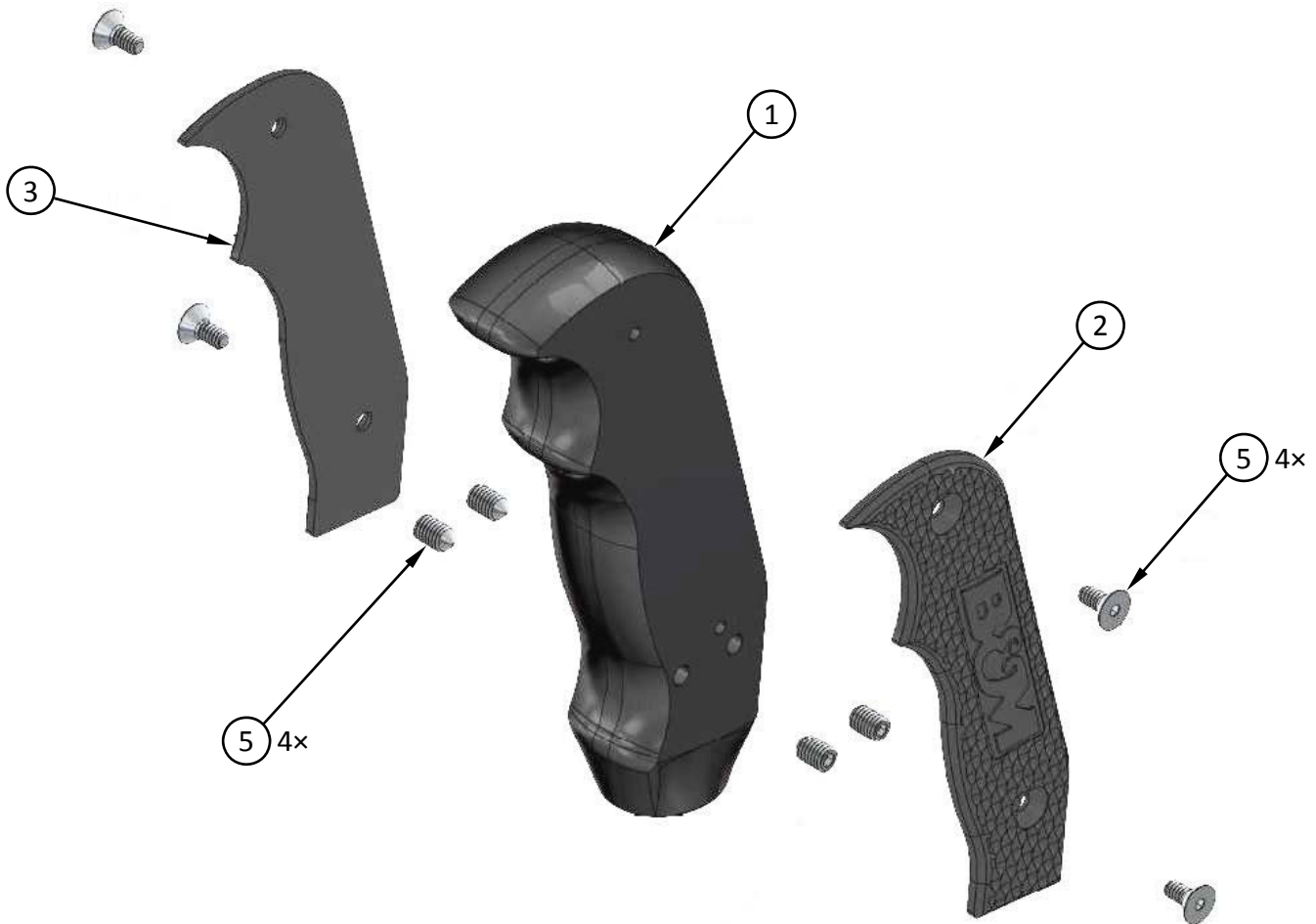




Installation Instructions for  
**MAGNUM GRIP SHIFTER HANDLE**  
for 2008-2017 POLARIS RZR  
Catalog No. (Grip Color): 81089 (Black);  
81140 (Blue); 81141 (Green); 81142 (Orange);  
81143 (Red); 81144 (White); 81145 (Yellow)



REFER TO PARTS LIST ON NEXT PAGE



Installation Instructions for  
**MAGNUM GRIP SHIFTER HANDLE**  
 for 2008-2017 POLARIS RZR  
 Catalog No. (Grip Color): 81089 (Black);  
 81140 (Blue); 81141 (Green); 81142 (Orange);  
 81143 (Red); 81144 (White); 81145 (Yellow)

**PARTS LIST**

ITEM NO.	PART NO.	DESCRIPTION	QTY.
1	4001717-88	MAGNUM GRIP SHIFTER HANDLE BODY, POLARIS RZR	1
2	4001492-88	MAGNUM GRIP SHIFTER PLATE, LEFT, DIAMOND KNURL – BLACK	1
	4001724-88	" " " " " " " " – BLUE	
	4001732-88	" " " " " " " " – GREEN	
	4001730-88	" " " " " " " " – ORANGE	
	4001726-88	" " " " " " " " – RED	
	4001734-88	" " " " " " " " – WHITE	
	4001728-88	" " " " " " " " – YELLOW	
3	4001495-88	MAGNUM GRIP SHIFTER PLATE, RIGHT, DIAMOND KNURL – BLACK	1
	4001725-88	" " " " " " " " – BLUE	
	4001733-88	" " " " " " " " – GREEN	
	4001731-88	" " " " " " " " – ORANGE	
	4001727-88	" " " " " " " " – RED	
	4001735-88	" " " " " " " " – WHITE	
	4001729-88	" " " " " " " " – YELLOW	
4	3401537-00	SCREW, SOCKET, FLAT HEAD, 6-32 × 5/16", STAINLESS	4
5	3401538-00	SET SCREW, CONE POINT, 10-32 × 5/16", 18-8 SS	4

**Before starting**, take a moment to read and understand these instructions for your B&M Magnum Grip Shifter Handle. Use the parts drawing and list to verify your kit's contents. In the unlikely event of missing parts, please contact B&M Technical Support for replacements.

**We highly recommend that you retain all factory parts.**



1. **Turn off your vehicle's ignition and set the parking brake.** Carefully remove the stock shifter handle cap with a flat tip screwdriver or plastic trim tool.



2. Remove the shifter handle screw, then pull the handle off the shifter lever.



3. Thread the 4 set screws (Item 5) about 2-3 turns into the shifter handle body (1). (Two screws each side.)



4. Slide the shifter handle body all the way onto the shifter lever.



5. Tighten all 4 set screws to secure the shifter handle to the shifter lever.



6. Install the left and right side plates (2) and (3) with the 4 flathead screws (4). (Two screws each side.)

**Congratulations, the installation of your B&M Magnum Grip Shifter Handle is now complete!**