



350 S. St. Charles St. Jasper, In. 47546
Ph. 812.482.2932 Fax 812.634.6632
www.ridetech.com

Part # 19003004
3000lb. Air Over Leaf Kit – 2.5” Leaf / Underframe

Components:

2	90009000	Tapered sleeve air spring
2	90000061	2.5” leaf spring bracket
2	90000070	Air spring roll plate
2	90000033	Under frame air spring bracket
2	31954201	¼”npt x ¼” tube 90 degree airline fitting

Hardware:

6	99371001	3/8” x 3/4” USS bolt	Air spring mounts
6	99373005	3/8” lock washer	Air spring mounts
8	99371004	3/8” x 1 1/4” USS bolt	Upper bracket to frame
8	99372002	3/8” USS Nylok nut	Upper bracket to frame
14	99373003	3/8” flat washer	Air spring mounts

REAR INSTALLATION

SUPPLEMENT FOR MOUNTING AIRSPRING ON TOP OF LEAFSPRING

1. This installation is performed with the vehicle at ride height. When you raise the vehicle to a comfortable working height, support it by the axle housing.
2. Attach the lower airspring bracket to the top of the leafspring, preferably behind the rearend, using the attachment hardware provided. On some models, the lip of the airspring bracket will locate in the axle plate. **NOTE:** On some vehicles, a softer ride is obtained by removing leaves from the spring pack. Be sure to leave at least 2 leaves in the spring pack for stability.
3. Attach the airspring to the lower bracket.
4. The upper bracket can now be attached to the airspring and its placement on the framerrail can be determined. If the leafspring is under the frame, the upper bracket will be a "J" shaped piece that the airspring screws into. If the leafspring is beside the frame, the upper bracket will be an angle bracket that will bolt on to the frame. Using the proper inflated dimensions, check for airspring clearance to nearby obstacles. [Refer to the airspring dimension chart.] Note that the proper inflated dimensions will not be the same as the uninflated dimensions.
5. Mark the bolt holes for drilling or clamp in place to weld.[Remove airspring before welding to avoid weld splatter damage!]
6. Reassemble, inflate, and re-inspect for proper clearance.

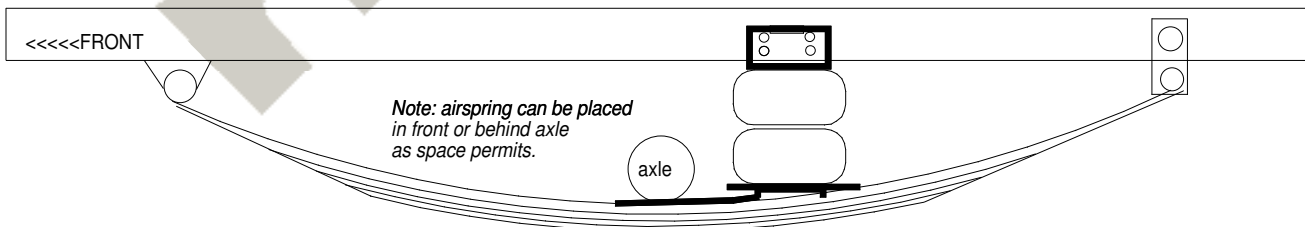
REMEMBER: THE AIRSPRING BELLOWS MUST NOT TOUCH ANYTHING AT ANYTIME!! IT IS THE FINAL RESPONSIBILITY OF THE INSTALLER TO DETERMINE ADEQUATE CLEARANCE.

CAUTION!!! EXCEEDING THE DIMENSIONS IN THE CHART BELOW MAY RESULT IN SUDDEN AIRSPRING FAILURE! PROPER CLEARANCES MUST BE MAINTAINED AT ALL RIDE HEIGHTS AND STEERING ANGLES. BUMPSTOPS MUST BE USED TO LIMIT SUSPENSION TRAVEL BEFORE THESE DIMENSIONS ARE EXCEEDED. PLEASE CALL AIR RIDE TECHNOLOGIES IF YOU HAVE ANY QUESTIONS.

Installation using 7000series or 9000 series airspring



Installation using F6957 airspring



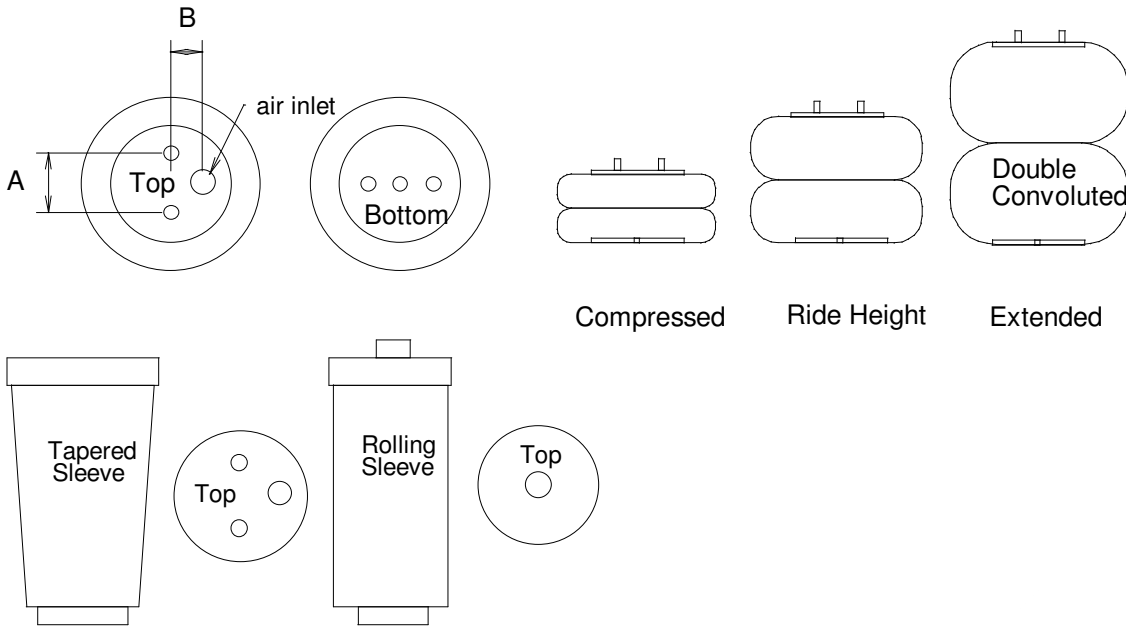


Typical sideframe installation



Typical underframe installation

ridetech
Air Ride Technologies



AIRSPRING DIMENSION CHART

PART#	TYPE	Capacity @100psi	Compressed Height	Ride Height	Max. Height	Max Diameter	Bolt Pattern
255C [F6957]	Double Convoluted	2040#	3"[built in bumpstop]	4.5"-5.5"	7"	6.5"	A=1.75 B=.875
224C [F0335]	Double Convoluted	3150#	3"	5"-6"	8"	8.0"	A=2.75 B=1.312
26C [F7325]	Double Convoluted	3400#	3"	5"-6"	10"	8.5"	A=2.75 B=1.312
20 [F6908]	Double Convoluted	4790#	3"	7"-8"	11"	9.9"	A=3.50 B=1.75
F9000	Tapered Sleeve	1500#	4.5	8"-9.5"	13"	5"	A=2.75 B=1.312
F9002	Tapered Sleeve	1500#	4.5	7"-8.5"	12"	5"	A=2.75 B=1.312
F9003	Tapered Sleeve	1500#	4.5	6"-7"	11"	5"	A=2.75 B=1.312
F9010	Tapered Sleeve	2000#	6.5"	10.5"-11.5"	16"	6.5"	.750 SAE/.250npt
7012	Rolling Sleeve	1020#	4"	7.5"-8.5"	13"	5"	.750SAE/.125npt
7076	Rolling Sleeve	800#	2.25"	5"-6"	9"	4"	.750SAE/.125npt

CAUTION!!! EXCEEDING THESE DIMENSIONS MAY RESULT IN SUDDEN AIRSPRING FAILURE! PROPER CLEARANCES MUST BE MAINTAINED AT ALL RIDE HEIGHTS AND STEERING ANGLES. BUMPSTOPS MUST BE USED TO LIMIT SUSPENSION TRAVEL BEFORE THESE DIMENSIONS ARE EXCEEDED.