

350 S. St. Charles St. Jasper, In. 47546
 Ph. 812.482.2932 Fax 812.634.6632
www.ridetech.com

Part # 11436799 73-91 GM C-30 Airbar

2	90002107	Air spring
1	90000937	Panhard bar – TT 17" (20.5" C-C)
2	90001010	Lower Bar – TW 23" (25" C-C)
2	90001006	Upper Bar – TW 17.375" (19.375" C-C)
1	90000181	Panhard bar frame bracket
1	90000174	Driver side lower axle bracket
1	90000175	Passenger side lower axle bracket
2	90000171	Upper Axle Bracket
1	90000226	Panhard bar axle bracket
2	90000002	Upper Air spring mount
1	90000130	Upper Bar Frame Mount
1	90000131	Upper Bar Frame Mount
2	90001589	Kevlar line Heim end – .75" thread x .625" I.D.
1	99752004	3/4" SAE jam nut – installed on Heim end
8	90001085	Poly bushing half – installed in bars & rod ends
4	90000198	Inner bushing sleeve – installed in bars & rod ends
2	90001082	Short Bumpstop
4	90001588	Large rod end – 1" thread
4	99952001	1" SAE jam nut – installed on rod end
1	90001050	Bolt Kit

Fasteners

8	5/8 x 7" sae bolts	Axle Mounts
8	5/8 sae Nyloc nuts	Axle Mounts
16	5/8 sae Flat washers	Axle Mounts
7	5/8 sae Thin nyloc jam nut	Bar ends/panhard frame mount
6	5/8 x 4.5" sae bolts	Bar ends to brackets
2	5/8 x 1.75 sae bolts	Panhard bar to bracket
1	5/8 Lock washer	panhard bar to bracket
4	1/2 x 1" uss bolts	Lower Airspring
4	1/2 lock washers	lower airspring
8	7/16 x 1.5" uss bolts	Upper bar frame mount
8	7/16 Nyloc Nuts	Upper bar frame mount
16	7/16 uss Flat Washers	Upper bar frame mount
5	3/8 x 1" uss bolts	Panhard bracket to axle
9	3/8 lock washers	panhard bracket to axle/ upper airspring mounting
9	3/8 flat washers	panhard bracket to axle/ upper airspring mounting
4	3/8 x 3/4 uss bolts	upper airspring mounting
11	1/2 x 1-1/4 uss bolts	Upper airspring mount/ panhard bar frame mount
11	1/2 nyloc nut	Upper airspring mount/ panhard bar frame mount
22	1/2 flat washers	Upper airspring mount/ panhard bar frame mount



A169-1



A130-1



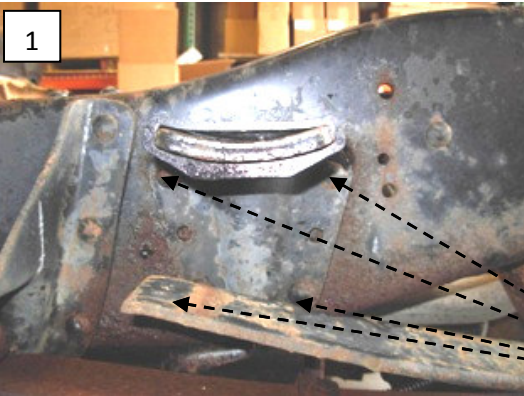
A125-2



A1064D-1



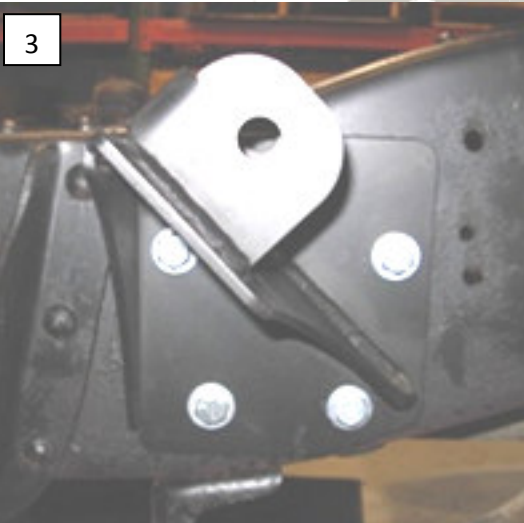
1 comfortable working
 2 the frame ahead of
 3 support the axle
 4 jackstands. Since you
 5 rings you will need to
 6 e axle housing to
 7 n the leafsprings are

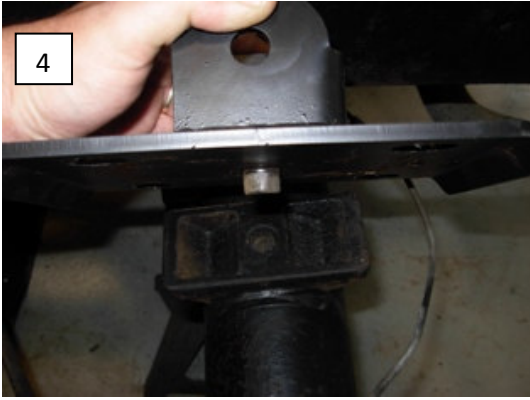


8 overload bracket
 9 rivets. Repeat
 10 passenger side.
 11 moved, now drill
 12 ew supplied
 13 both driver and

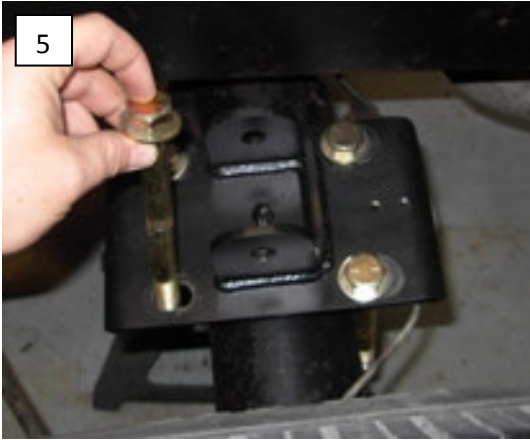


14 aware (7/16 x 1.5"
 15 ol the new A???
 16 drilled in step 3.
 17 nd passenger side.



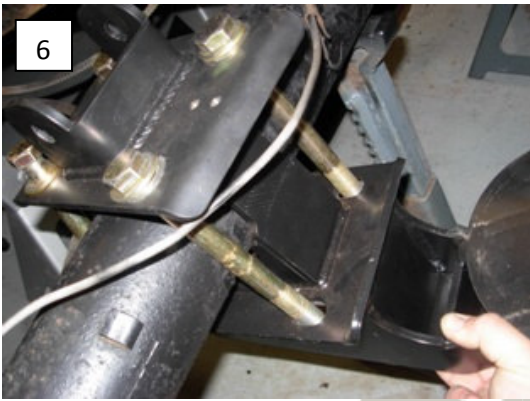


4. (fig4) Now move to the axle bracket assembly. Using bracket (A125-2) it sits on top of the axle using the pin to locate the bracket to the axle. The open end of the bracket faces toward the cab of the truck. The upper bar will be bolted here in another step. Repeat this step for both driver and passenger side.



5. Using the supplied hardware (5/8 x 7" sae bolts, washers and nyloc nuts) attach the lower axle bracket (A125-3L & A125-3R) shown in (Fig 5 & Fig 6).

Note: There is a left and right side to the lower bracket (a125-3L) Make sure the lower round plate goes under the frame rails.



6. (fig7) Now the bars are ready to be installed. Using the factory front leaf mount bolt the new bar in seen . Original leafspring bolts are used.



8

8. (fig8) Now Bolt the lower bar into the new axle bracket assembly installed in step 5.



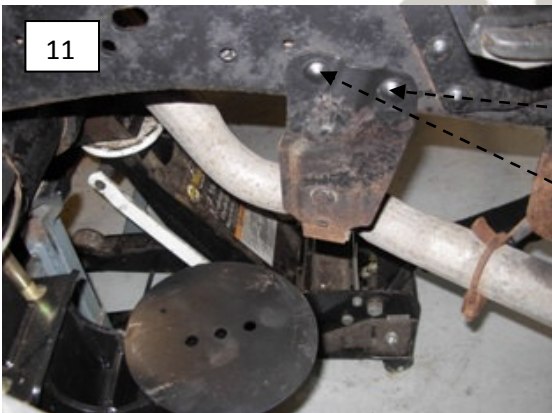
9

9. (fig9) Now Bolt the upper bar into the new upper bar mount using the supplied 5/8x4.5" sae bolts, nuts, and washers.



10

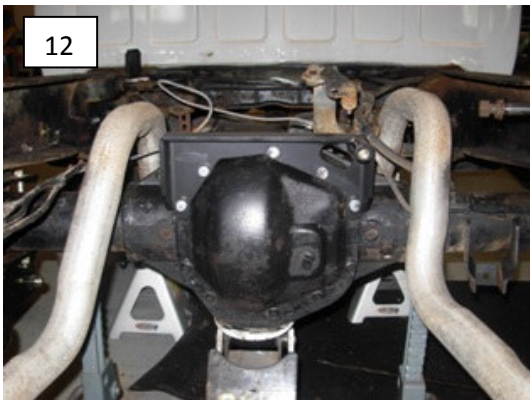
10. (fig10) Now Bolt the upper bar into the Axle bracket assembly using the supplied 5/8x4.5" sae bolts, nuts, and washers.



11

11. (fig11) This bracket must be removed to install the upper airspring bracket to the frame, just drill the rivets out and remove.





12. (fig12) Now the Panhard bar axle cover is ready to be installed, just unbolt the top 5 bolts from the rearend and replace with the supplied 3/8x1" bolts, washers and lock washers.



13. (fig13) use the panhard bar as a guide to locate the panhard frame mount these holes will also be used for the upper airspring mount.



14. (fig14-15) The upper airspring mount and panhard frame mount will share a pre existing hole in the chassis, this hole will capture the top hole (fig15) of the airspring bracket and the middle hole (fig14) in panhard bracket .





16. (fig16) Mark the remaining holes to be drilled in the upper airspring and panhard frame mounts.



17. (fig17-18) Now the airspring (F2107) can be bolted into the upper and lower mounts.

Note. The lower bolt in the airspring may need to be loosened to orientate the holes in the bags and mounts.



18. Install fitting into airspring, make sure to use a sealing agent Teflon tape or paste is the best.

Note. The fittings come with a anti seize on the threads, this will not seal the airspring. Make sure to use Teflon.



19. Install new shocks into stock location. This completes the installation of the Airbar system into your truck. If there is any additional help needed please contact us Monday-Friday 8am-6pm eastern time 812-482-2932 or sales@ridetech.com