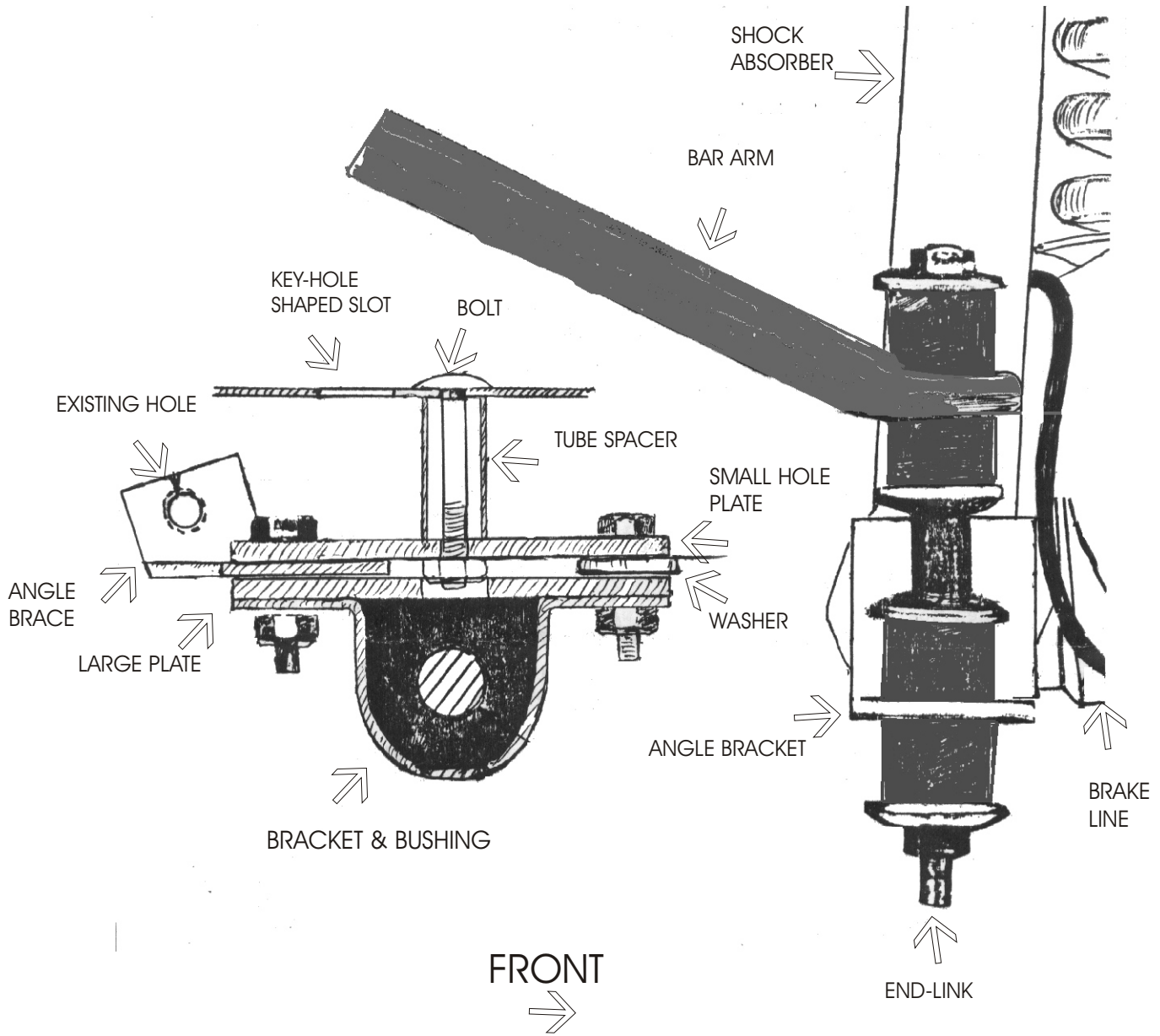


DIRECTION 287



VIEW: LEFT SIDE AS SEEN FROM RIGHT SIDE

Direction 287

Step #1. If your Fiesta had the optional light duty factory bar it should be removed.

Step #2. Remove nut from bolts that attaches lower ends of shock absorbers. Pass bolts through hole in small side of angle (from inside it) and replace bolt. Position angles so they are installed as illustrated.

Step #3. Pass bar over tailpipe, mid-section to rear and arms forward with forges angled so they are near horizontal.

Step #4. Assemble end-link so as to connect bar eye to hole in horizontal portion of angle bracket as shown. Brake lines that arch back around the rear of the axle should be bent inboard slightly if there is any possibility of the bar ends touching them when the suspension moves down.

Step #5. Raise bar mid-section to car bottom. Position D-shaped bushing on bar mid-section under the existing key-hole shaped slots in the underbody. Place the 5/16" bolt through the hanging bracket and start the nut. Then slide the head of the bolt into the key-hole cut out, and force it all the way back to the small end. Tighten nut securely.

Step #6. Assemble base plate, angle brace, washer, and bracket around the D-shaped bushing on the bar and secure with the bolts and lock-nuts provided, as illustrated. Hole in vertical side of angled brace then is aligned with the existing hole in the lip of the fender well.

Step #7. Road test your Fiesta to familiarize yourself to its new handling. As we cannot supervise your installation or driving, we cannot be responsible for more than the cost of the kit.

NOTE: For best balance and control, this kit should be used with our 3/4" diameter front bar #138.

HARDWARE

2	RH 028 Angles	2	RH 015 End-Links
2	RH 230 Bolts	2	RH 064 Tube Spacers
1	RH 602 Bracket	1	RH 603 Bracket
2	RH 034 Plates	2	RH 034B Plates
4	RH 104 Washers	2	RH 040 Brackets
2	RH 510 Bushings	6	RH 200 Bolts
8	RH 307 Lock-Nuts		