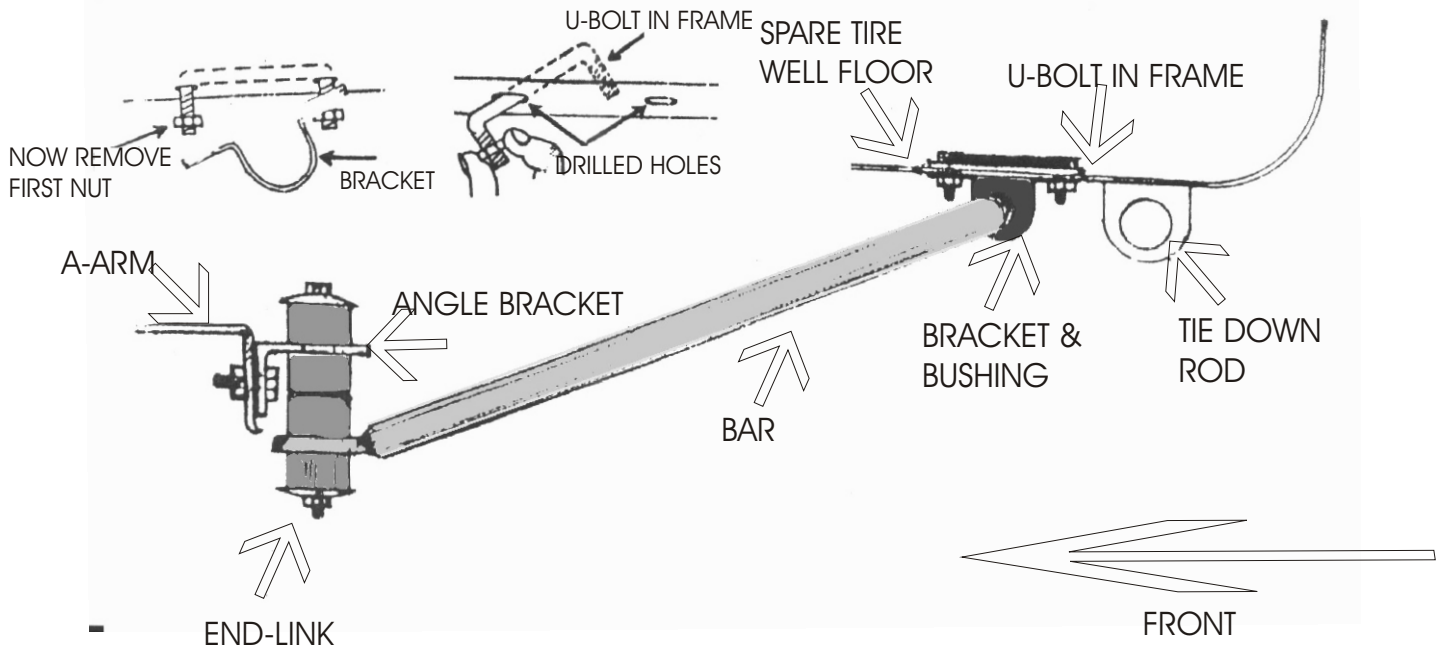


DIRECTION 213

HOW TO INSTALL A U-BOLT



Direction #213

Step #1. Assemble the end-link on the bar eye. See the illustration for correct sequence. The large hole of the angle brackets are above the bar eye. The cupped washers face the bushings and have their stepped surface toward the bracket or bar eye.

Step #2. Slip the mid-section bushings onto the bar near the bends. Hold the bar so the bushings are up against the tire well with the arms facing forward so that the vertical side of the angle brackets are against the rear of the A-arm. Center the bar so the angles are equidistant out on the A-arm. Mark through the hole in the angle bracket then drill the rear of the A-arm with a 3/8" drill bit. Be sure the end-links are vertical.

Step #3. Using the 3/8" bolts provided, bolt the angles to the A-arm.

Step #4. Raise the bar mid-section to the bottom of the spare tire well, adjust the location of the mid-and mark the well for drilling. Drill with a 5/16" drill bit using the bracket plate as a template. Using the 5/16" bolts provided, secure the bar bracket so that the bar bushing is held securely. Be sure that the backing plate is inside above the well floor and that the heads of the bolts are inside in order that the spare tire will not be damaged by the bolt end.

Step #5. Check all fastenings for suitable tightness (the nut on the bottom of the end-link should not be so tight as to distort the end-link bushings). Have someone bounce the rear of the car to check for full clearance throughout the suspension travel distance. Road test the vehicle to familiarize yourself to its new handling. As we cannot supervise your installation or driving, we cannot be held responsible for more than the cost of the kit. For best balance and control, this kit should be used in conjunction with our front bar.

HARDWARE

2	RH 013End-Links	2	RH 040Brackets
2	RH 510Bushings	2	RH 022Angle Brackets
2	RH 031Plates	2	RH 402U-Bolts
6	RH 304Lock-Nuts	2	RH 214Bolts
2	RH 102Washers		